

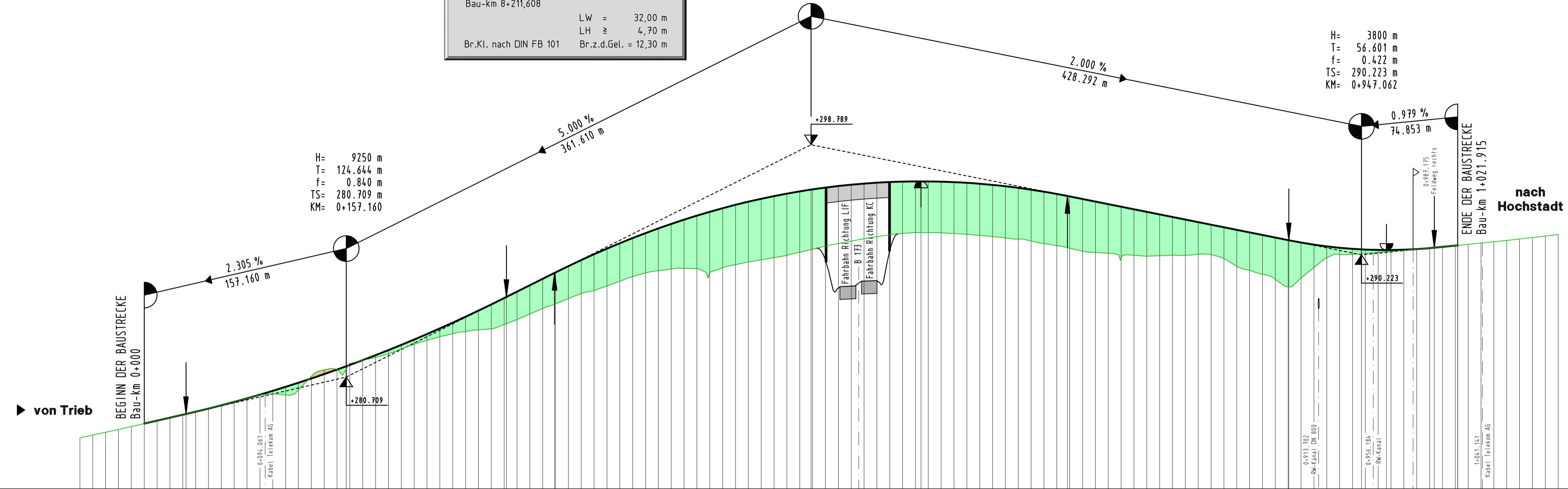
Bauwerk 8-1
Überführung der B 173 alt
zwischen Trieb und Hochstadt
 Bau-km 8+211,608

LW = 32,00 m
 LH ≥ 4,70 m
 Br.Kl. nach DIN FB 101 Br.z.d.Gel. = 12,30 m

H= 5700 m
 T= 199.500 m
 f= -3.491 m
 TS= 298.789 m
 KM= 0+518.770

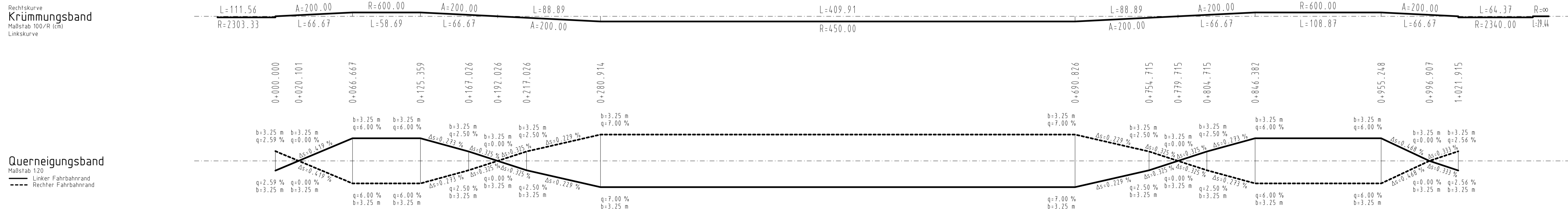
H= 3800 m
 T= 56.601 m
 f= 0.422 m
 TS= 290.223 m
 KM= 0+947.062

H= 9250 m
 T= 124.644 m
 f= 0.840 m
 TS= 280.709 m
 KM= 0+157.160



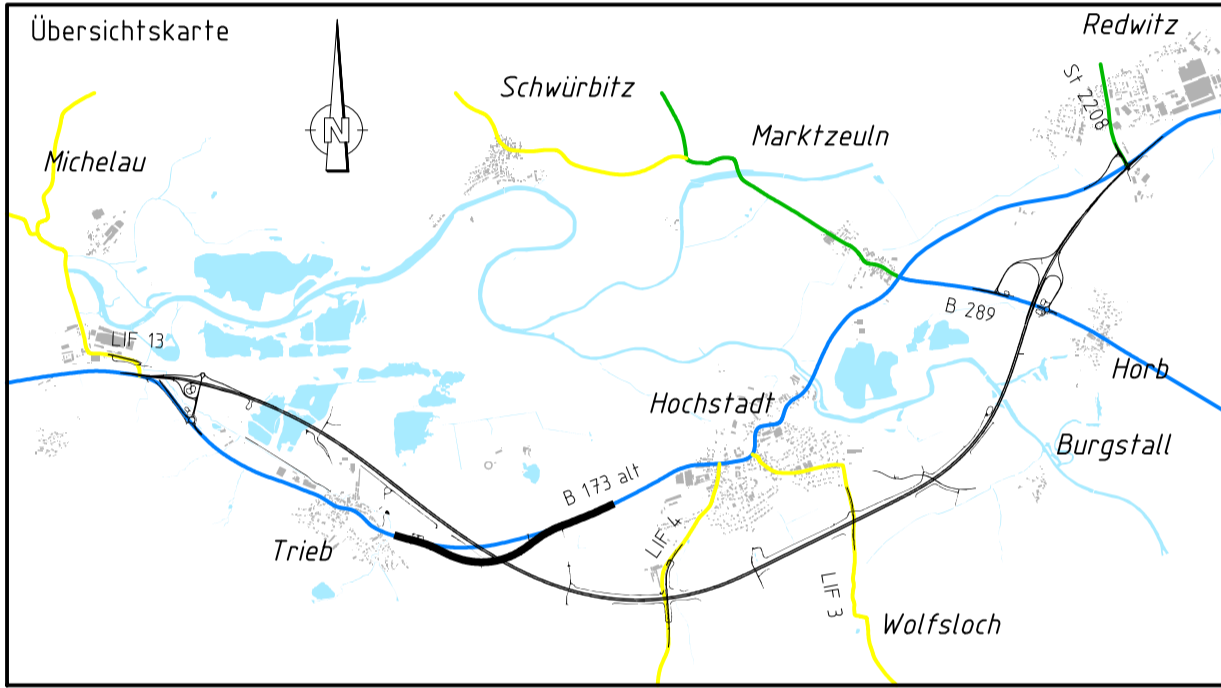
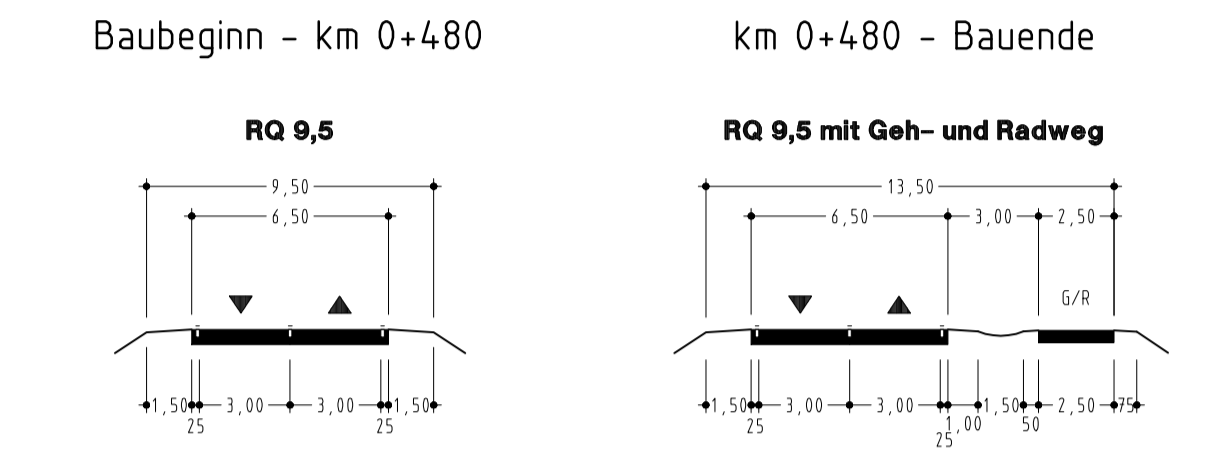
M = 1:2000/200
 NN 272.00

| Station | GRADIENTE | GELÄNDE |
|---------|----------------|----------------|
| 0+000 | 0.000 277.086 | -50.00 275.98 |
| 0+010 | 0.000 277.316 | -40.00 276.20 |
| 0+020 | 20.000 277.547 | -30.00 276.41 |
| 0+030 | 30.000 277.778 | -20.00 276.62 |
| 0+040 | 40.000 278.011 | -10.00 276.85 |
| 0+050 | 50.000 278.255 | 0.000 277.09 |
| 0+060 | 60.000 278.510 | 10.000 277.32 |
| 0+070 | 70.000 278.775 | 20.000 277.547 |
| 0+080 | 80.000 279.052 | 30.000 277.778 |
| 0+090 | 90.000 279.339 | 40.000 278.011 |
| 0+100 | 0.000 279.637 | 50.000 278.26 |
| 0+110 | 10.000 279.946 | 60.000 278.52 |
| 0+120 | 20.000 280.266 | 70.000 278.78 |
| 0+130 | 30.000 280.594 | 80.000 279.052 |
| 0+140 | 40.000 280.937 | 90.000 279.339 |
| 0+150 | 50.000 281.290 | 0.000 279.641 |
| 0+160 | 60.000 281.653 | 10.000 279.946 |
| 0+170 | 70.000 282.026 | 20.000 280.266 |
| 0+180 | 80.000 282.411 | 30.000 280.594 |
| 0+190 | 90.000 282.806 | 40.000 280.937 |
| 0+200 | 0.000 283.212 | 50.000 281.31 |
| 0+210 | 10.000 283.629 | 60.000 281.76 |
| 0+220 | 20.000 284.057 | 70.000 282.23 |
| 0+230 | 30.000 284.496 | 80.000 282.62 |
| 0+240 | 40.000 284.945 | 90.000 283.026 |
| 0+250 | 50.000 285.405 | 0.000 283.441 |
| 0+260 | 60.000 285.876 | 10.000 283.857 |
| 0+270 | 70.000 286.358 | 20.000 284.281 |
| 0+280 | 80.000 286.851 | 30.000 284.718 |
| 0+290 | 90.000 287.351 | 40.000 285.167 |
| 0+300 | 0.000 287.851 | 50.000 285.627 |
| 0+310 | 10.000 288.351 | 60.000 286.097 |
| 0+320 | 20.000 288.815 | 70.000 286.576 |
| 0+330 | 30.000 289.285 | 80.000 287.064 |
| 0+340 | 40.000 289.764 | 90.000 287.561 |
| 0+350 | 50.000 290.251 | 0.000 288.061 |
| 0+360 | 60.000 290.746 | 10.000 288.561 |
| 0+370 | 70.000 291.246 | 20.000 289.061 |
| 0+380 | 80.000 291.746 | 30.000 289.561 |
| 0+390 | 90.000 292.246 | 40.000 290.061 |
| 0+400 | 0.000 292.746 | 50.000 290.561 |
| 0+410 | 10.000 293.246 | 60.000 291.061 |
| 0+420 | 20.000 293.746 | 70.000 291.561 |
| 0+430 | 30.000 294.246 | 80.000 292.061 |
| 0+440 | 40.000 294.746 | 90.000 292.561 |
| 0+450 | 50.000 295.246 | 0.000 293.061 |
| 0+460 | 60.000 295.746 | 10.000 293.561 |
| 0+470 | 70.000 296.246 | 20.000 294.061 |
| 0+480 | 80.000 296.746 | 30.000 294.561 |
| 0+490 | 90.000 297.246 | 40.000 295.061 |
| 0+500 | 0.000 297.746 | 50.000 295.561 |
| 0+510 | 10.000 298.246 | 60.000 296.061 |
| 0+520 | 20.000 298.746 | 70.000 296.561 |
| 0+530 | 30.000 299.246 | 80.000 297.061 |
| 0+540 | 40.000 299.746 | 90.000 297.561 |
| 0+550 | 50.000 300.246 | 0.000 298.061 |
| 0+560 | 60.000 300.746 | 10.000 298.561 |
| 0+570 | 70.000 301.246 | 20.000 299.061 |
| 0+580 | 80.000 301.746 | 30.000 299.561 |
| 0+590 | 90.000 302.246 | 40.000 300.061 |
| 0+600 | 0.000 302.746 | 50.000 300.561 |
| 0+610 | 10.000 303.246 | 60.000 301.061 |
| 0+620 | 20.000 303.746 | 70.000 301.561 |
| 0+630 | 30.000 304.246 | 80.000 302.061 |
| 0+640 | 40.000 304.746 | 90.000 302.561 |
| 0+650 | 50.000 305.246 | 0.000 303.061 |
| 0+660 | 60.000 305.746 | 10.000 303.561 |
| 0+670 | 70.000 306.246 | 20.000 304.061 |
| 0+680 | 80.000 306.746 | 30.000 304.561 |
| 0+690 | 90.000 307.246 | 40.000 305.061 |
| 0+700 | 0.000 307.746 | 50.000 305.561 |
| 0+710 | 10.000 308.246 | 60.000 306.061 |
| 0+720 | 20.000 308.746 | 70.000 306.561 |
| 0+730 | 30.000 309.246 | 80.000 307.061 |
| 0+740 | 40.000 309.746 | 90.000 307.561 |
| 0+750 | 50.000 310.246 | 0.000 308.061 |
| 0+760 | 60.000 310.746 | 10.000 308.561 |
| 0+770 | 70.000 311.246 | 20.000 309.061 |
| 0+780 | 80.000 311.746 | 30.000 309.561 |
| 0+790 | 90.000 312.246 | 40.000 310.061 |
| 0+800 | 0.000 312.746 | 50.000 310.561 |
| 0+810 | 10.000 313.246 | 60.000 311.061 |
| 0+820 | 20.000 313.746 | 70.000 311.561 |
| 0+830 | 30.000 314.246 | 80.000 312.061 |
| 0+840 | 40.000 314.746 | 90.000 312.561 |
| 0+850 | 50.000 315.246 | 0.000 313.061 |
| 0+860 | 60.000 315.746 | 10.000 313.561 |
| 0+870 | 70.000 316.246 | 20.000 314.061 |
| 0+880 | 80.000 316.746 | 30.000 314.561 |
| 0+890 | 90.000 317.246 | 40.000 315.061 |
| 0+900 | 0.000 317.746 | 50.000 315.561 |
| 0+910 | 10.000 318.246 | 60.000 316.061 |
| 0+920 | 20.000 318.746 | 70.000 316.561 |
| 0+930 | 30.000 319.246 | 80.000 317.061 |
| 0+940 | 40.000 319.746 | 90.000 317.561 |
| 0+950 | 50.000 320.246 | 0.000 318.061 |
| 0+960 | 60.000 320.746 | 10.000 318.561 |
| 0+970 | 70.000 321.246 | 20.000 319.061 |
| 0+980 | 80.000 321.746 | 30.000 319.561 |
| 0+990 | 90.000 322.246 | 40.000 320.061 |
| 1+000 | 0.000 322.746 | 50.000 320.561 |
| 1+010 | 10.000 323.246 | 60.000 321.061 |
| 1+020 | 20.000 323.746 | 70.000 321.561 |
| 1+030 | 30.000 324.246 | 80.000 322.061 |
| 1+040 | 40.000 324.746 | 90.000 322.561 |
| 1+050 | 50.000 325.246 | 0.000 323.061 |
| 1+060 | 60.000 325.746 | 10.000 323.561 |
| 1+070 | 70.000 326.246 | 20.000 324.061 |
| 1+080 | 80.000 326.746 | 30.000 324.561 |
| 1+090 | 90.000 327.246 | 40.000 325.061 |
| 1+100 | 0.000 327.746 | 50.000 325.561 |



ZEICHENERKLÄRUNG

| | | | |
|--|-----------|--|------------|
| | Gradiente | | Damm |
| | Urgelände | | Einschnitt |



Entwurfsbearbeitung:

Höhner & Partner
 INGENIEURAKTIENGESELLSCHAFT
 BERATENDE INGENIEURE
 Hauptstraße 18a 96047 Bamberg, Tel. (0951)88081-0 Fax. (0951)88081-33

| | | |
|------------|------------|-------------|
| SBA1101 | Datum | Zeichen |
| bearbeitet | 2011,2012 | R. Kühnlein |
| geprüft | 26.03.2012 | C. Dremel |

Bamberg, den 26.03.2012

Freistaat Bayern
 Staatliches Bauamt Bamberg
 Franz-Ludwig-Straße 21, 96047 Bamberg, Tel. (0951)9530-0, Fax (0951)9530-1900, E-Mail: poststelle@stabbau.bayern.de

| | | | |
|--|------------|-----------|---------------|
| Planfeststellung | bearbeitet | 2011,2012 | T. Neundörfer |
| B 173 Lichtenfels - Kronach LICHTENFELS-ZETTLITZ (zweibahnig) 3. Bauabschnitt Michelau-Zettlitz | gezeichnet | | |
| | geprüft | März 2012 | J. Laußmann |

Höhenplan
 Verlegte B 173 alt Trieb-Hochstadt
 Maßstab 1:2000/200

Aufgestellt:
 Bamberg, den 30.03.2012
 Staatliches Bauamt
 Eisgruber, Baudirektor

Projekt: SBA1101
 Datei: GPL17501.PLT
 GPL17501